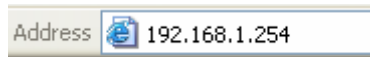
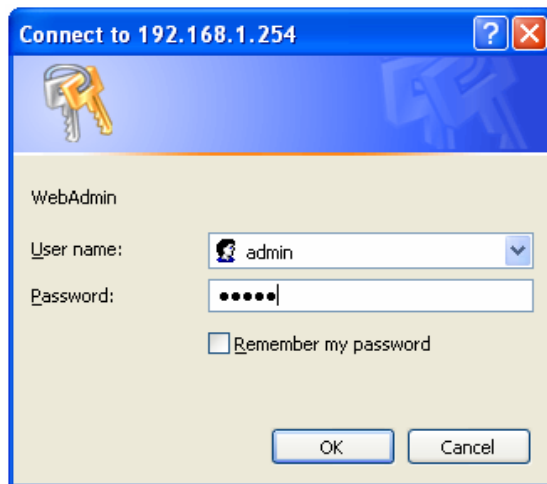


Billion 7402GXL Setup Guide

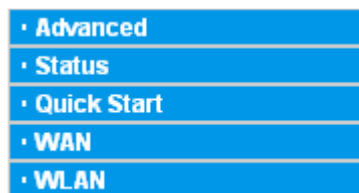
1. Plug the 3G Modem into the USB slot on the back of the Billion router.
2. Turn the device on.
3. Plug the Ethernet cable from the Billion Router into your PC or Laptop (windows should automatically set it up).
4. Open your Internet Browser (usually Internet Explorer).
5. In the address bar enter: 192.168.1.254 as shown. Press Enter or 'Go'.



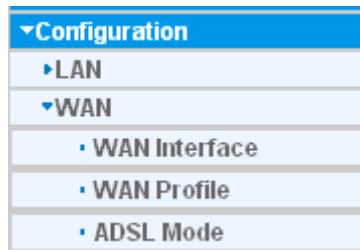
6. It will ask you for a Username and Password. *Username:* admin *Password:* admin. Press OK.



7. Once logged in click on Advanced on the left hand side.



8. Click on Configuration, click on WAN, and then click on WAN Interface.



9. Change the Main Port to 3G and click on Apply.

▼WAN Interface	
WAN Interface	
Main Port	3G (Current Main Port: ADSL)
<input type="button" value="Apply"/>	

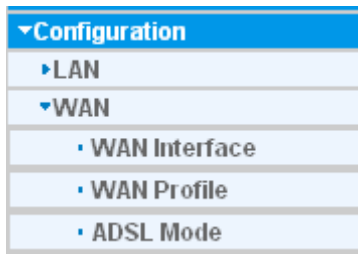
10. Click on WAN Profile on the left hand side:

▼Configuration
▶LAN
▼WAN
• WAN Interface
• WAN Profile
• ADSL Mode

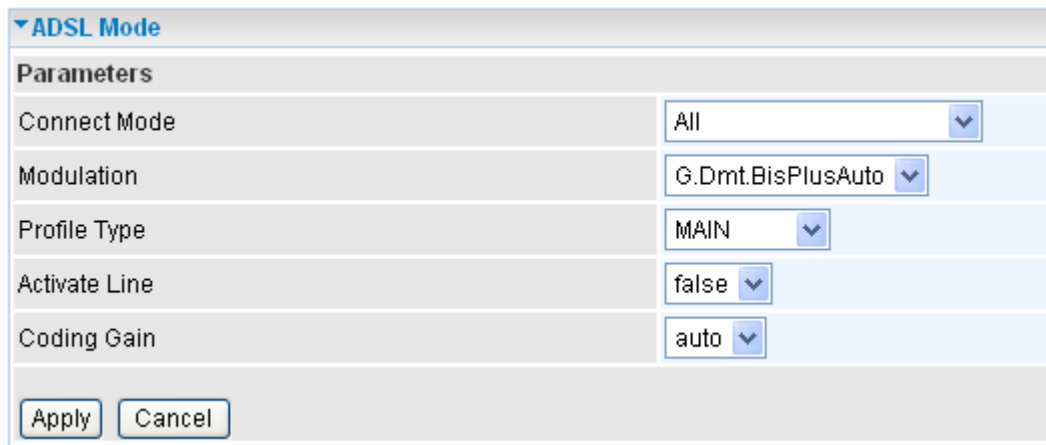
11. Set it up as follows. Then click on Apply.

▼WAN Connection	
Parameters	
Profile Port	3G
Mode	Automatic
TEL No.	*99#
APN	Connect
Username	
Password	
Auth. Protocol	Chap(Auto)
PIN	
Connection	Always On
Keep Alive	<input checked="" type="checkbox"/> Enable
Obtain DNS automatically	<input checked="" type="checkbox"/> Enable
Primary DNS/Secondary DNS	61.88.88.88 / 61.88.88.88
<i>*Warning: Entering the wrong PIN code three times will lock the SIM.</i>	
<input type="button" value="Apply"/>	

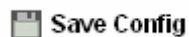
12. Click on ADSL Mode on the left hand side.



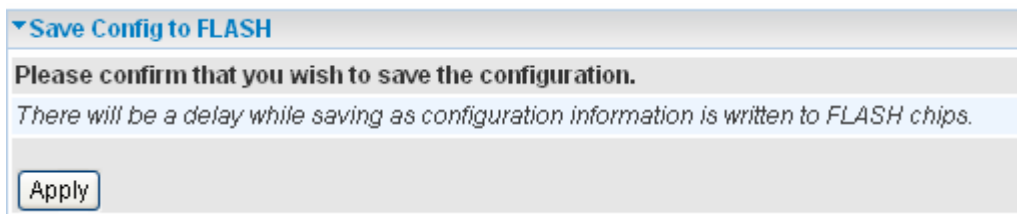
13. Set the settings as follows. Click on Apply.



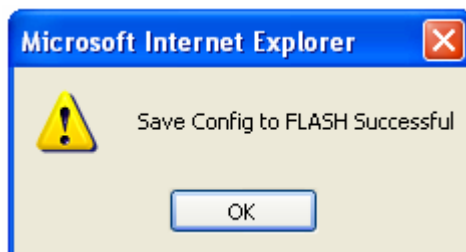
14. Click on Save Config at the bottom.



15. Click on Apply to save the settings to flash.



16. Click OK when the successful message comes up.



17. You have now setup your Billion Router successfully.