

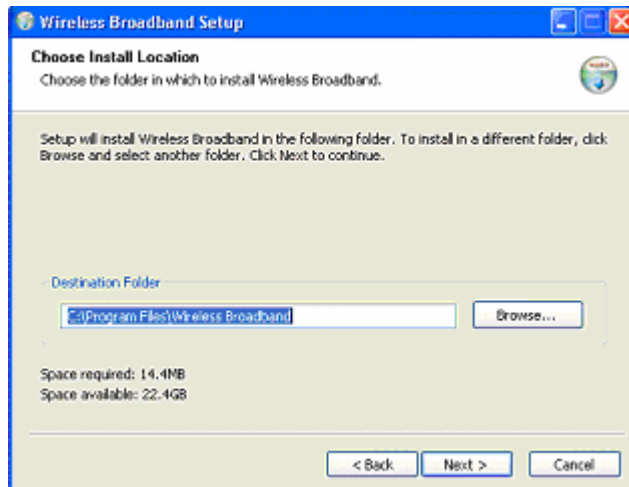


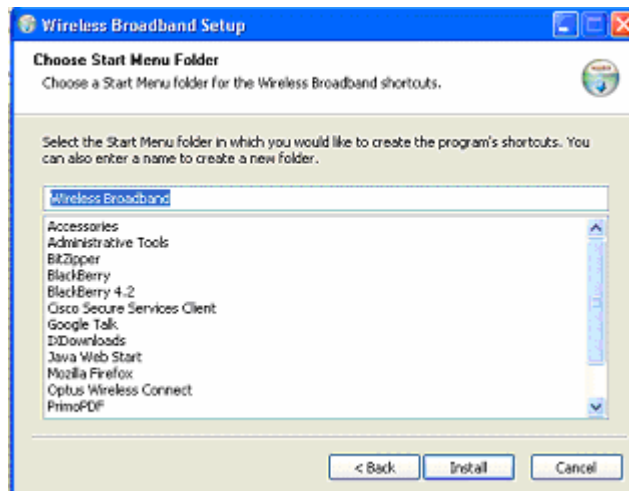
Huawei E160E Slimline USB Modem – Setup Guide

1)	Plug in the Huawei E160E into an available USB port on your Laptop or PC.
2)	If the installation does not automatically start, click on 'My Computer' on your desktop and locate 'Wireless BB' under the removable storage heading.
3)	Double-click the Wireless BB icon to begin the installation process.
4)	Click next on the first screen . 
5)	Click 'I Agree' to accept the licence agreement. 

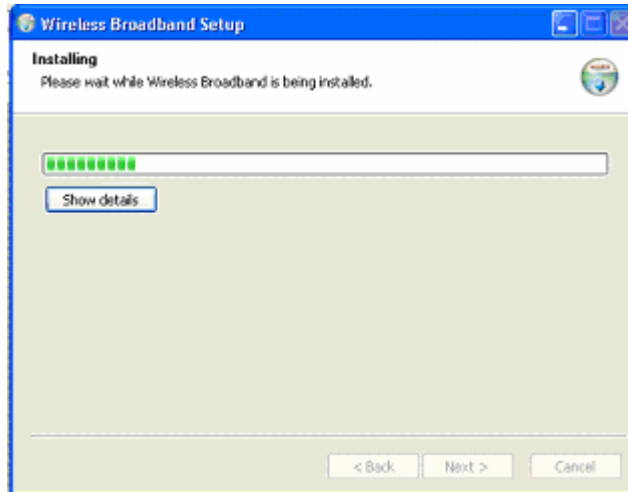
6) Select the installation path, or leave as is (recommended) and click Next.



7) Click 'Install' to continue.



8) Please wait for the program to install.

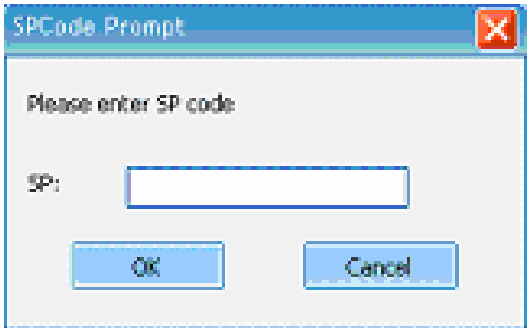


9) Click on 'Finish' to complete the installation.



10) Once installed a 'Wireless Broadband' icon will be installed on your desktop. Double click on it.



11)	<p>You may see the 'Enter SP Code' prompt. If prompted, enter the word "999A1" in lower case and press OK.</p>  <p>The screenshot shows a dialog box titled "SPCode Prompt" with a red close button in the top right corner. The text inside the dialog box reads "Please enter SP code". Below this text is a label "SP:" followed by an empty text input field. At the bottom of the dialog box are two buttons: "OK" and "Cancel".</p>
12)	<p>Click 'Connect' to connect to the 3G Wireless Broadband network.</p>
13)	<p>Installation procedure is now complete.</p>