

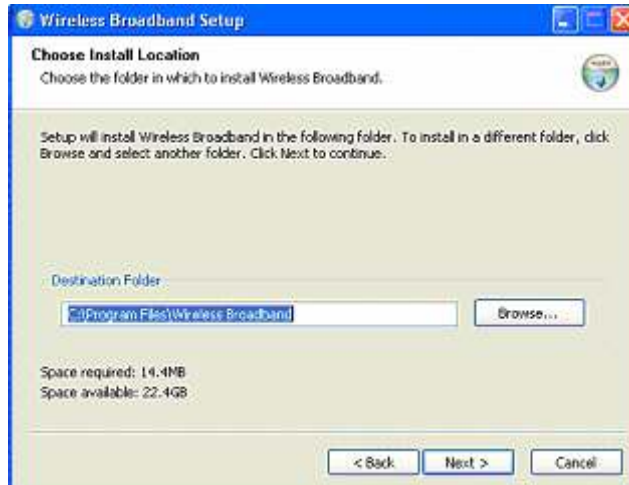


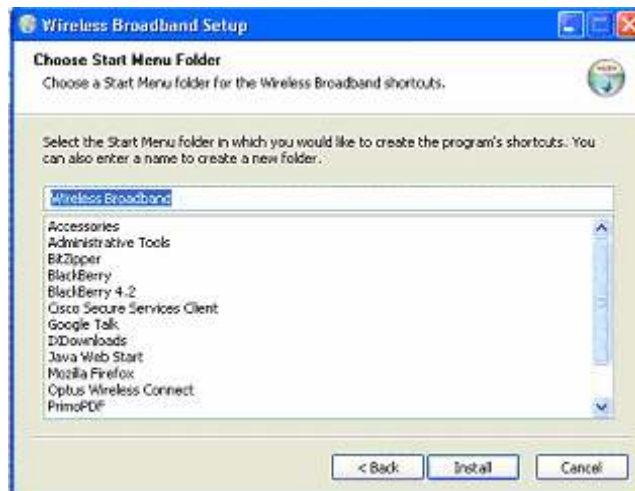
Huawei E169 Slimline USB Modem – Setup Guide

| | |
|----|--------------------------------------------------------------------------------------------------------------------------------------------------------|
| 1) | Plug in the Huawei E169 into an available USB port on your Laptop or PC. |
| 2) | If the installation does not automatically start, click on 'My Computer' on your desktop and locate 'Wireless BB' under the removable storage heading. |
| 3) | Double-click the Wireless BB icon to begin the installation process. |
| 4) | Click next on the first screen .  |
| 5) | Click 'I Agree' to accept the licence agreement.  |

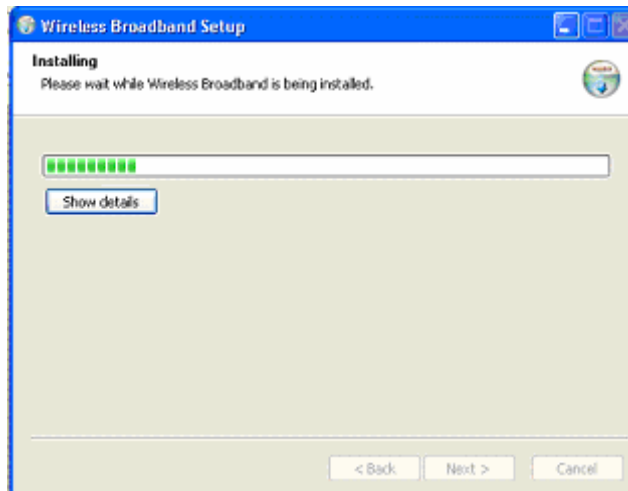
- 6) Select the installation path, or leave as is (recommended) and click Next.



- 7) Click 'Install' to continue.



8) Please wait for the program to install.

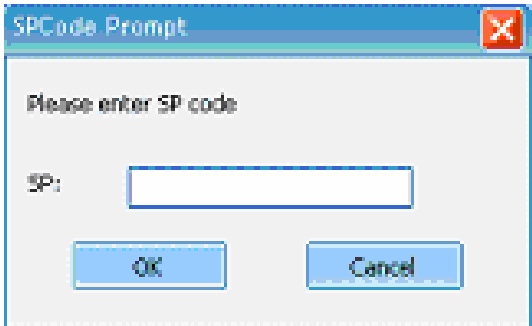


9) Click on 'Finish' to complete the installation.



10) Once installed a 'Wireless Broadband' icon will be installed on your desktop. Double click on it.



| | |
|-----|------------------------------------------------------------------------------------------------------------------------------------------------------------------------------------------------------|
| 11) | <p>You may see the 'Enter SP Code' prompt. If prompted, enter the word "broadband" in lower case and press OK.</p>  |
| 12) | <p>Click 'Connect' to connect to the 3G Wireless Broadband network.</p> |
| 13) | <p>Installation procedure is now complete.</p> |